



sportscouch™

1970

Sportscoach Motor Homes

Specifications and Features for Chevallero Model 25TM

Standard Equipment and Features

Exterior:

- Aerodynamic cab and low overall profile
- Automotive type styling — achieves (*in addition to modern appearance*) reduced air resistance at highway cruising speeds for improved performance, fuel economy and handling.
- Automotive-style 48 degree sloped, flat windshield
- Automotive-style sloped body side styling
- Color exterior vinyl and simulated wood grain availability (all-weather, washable, long life material)
- * Chrome bumpers with bumper guards, and chrome hub caps
- * Custom spare tire mount with easy tilt-out loading feature, locking cover, and tool storage
- Side directional lites

- Chrome side-mounted mirrors
- Bosch H.D. electric windshield wipers with 2 speeds and automatic blade park position
- Windshield washers
- Easy-reach windshield cleaning kit
- One piece anodized aluminum body side sliding window frames with screens — no unsightly exterior screws, fully weather stripped, prevent leakage.
- Porch lite and step lite
- Integrated style access doors and vents for clean, modern body side appearance

*Mandatory Option Package on this model. (See Price List)

Exclusive ModuleBeamTM Construction:

- Exclusive AstroTempTM Paneling. Sandwich type stressed skin aluminum sides with chemically pressure bonded expanded polyurethane foam (2" thick for superior thermal and sound insulation).
- Heavy mil all-weather washable bonded vinyl exterior surface, interior wall surface, and exterior, simulated wood grain.
- Exclusive Safety Beam/Frame design. Utilizes high strength extruded aluminum longitudinal bond beam frames top and middle, and high strength continuous perimeter frame of 2 X 4 box steel, lower, for side impact protection for passengers, gas tanks, and propane tank. Additional steel central roll-over structures, and front and rear structural steel frame members designed for maximum reinforcement. AstroTemp Panels mechanically bonded to bond beam frame extrusions and perimeter frame for additional strength and weatherization.
- AstroTemp Panel inner rear wall; fiberglass rear end cap.
- Fiberglass front cab section.
- Special reinforced AstroTemp Panel roof with fiberglass exterior skin, and weatherized aluminum/foam/wood sandwich floor.
- Total Construction Package ties bond beams, perimeter frame, roll-over structures, and front-rear frame members together with chassis frame rails and AstroTemp Panel



sections (*including roof and floor*) to achieve advanced modular unit design.

- Superior modular strength without unnecessary weight penalty, superior all-weatherization, superior passenger and coach safety and protection, superior sound and thermal insulation, and modular section repairability are provided by automotive/aerospace type technological advances of ModuleBeam Construction.

Sports Cab

(Standard on this model):

- Custom automotive style dash/cockpit design
- Full safety foam padded dash
- Thin pillar cab design
- Wood grain dash inserts
- Built-in package tray
- Custom trim appointments
- Premium steering wheel
- Exclusive overhead radio console with dual map lites
- Exclusive slim line motor box for easy seat access with auxiliary dinette seat built-in
- Fully sound and temperature insulated motor box
- Fully insulated, padded headliner
- Hidden radio antenna
- Dual padded full size visors
- Fully adjustable high back bucket seats with dual movable arm rests
- Full instrumentation



- Automotive type seating position and line-of-sight
- Modern swing pedal brake assembly
- Exclusive Comfort-Cruise accelerator pedal location
- Modern steering column mounted transmission shift lever
- Tinted safety glass throughout

Interior:

- Choice of color coordinated interior decors
- Sports trim group — includes custom contoured bed spreads with matching zippered pillow covers, and custom wood slat privatized drapes.
- High density 5" polyfoam cushions throughout, hospital approved fireproof
- Quality nylon shag carpeting with foam backing throughout
- Premium, washable H.D. 6 mil vinyl interior wall surfaces
- Access to all usable storage compartments

Kitchen:

- Automatic eye-level Trav-ler gas oven with automatic ignition, safety power exhaust vent and lite
- Four-burner, color-coordinated gas range
- * Maximum interior food storage group — includes separate color-coordinated General Thermetics electric refrigerator (3½ cu. ft.) and Sears Coldspot freezer (4½ cu. ft.).

Bedroom:

- Sleeps four (on this model)
(Six sleeper available on other models)
- Spacious full size rear wardrobe closet and*extra ¾ length center wardrobe closet and dual rear overhead cabinets —

Bathroom:

- Exclusive shower/tub module with built-in comfort seat, extra large wash basin and built-in soap dish, and Alson personal shower spray-head with pushbutton control
- Color-coordinated shower curtain

Plumbing:

- Dual 18 gallon holding tanks with independent valve controls for waste and water
- Exclusive hidden, locked water pressure gauge and fill
- City water hook-up

Heating:

- 23,000 BTU forced air ducted furnace with automatic thermostat control on wall and triple ducting
- 8 gallon electric hot water heater (engine water pre-heater

Electrical:

- Four duplex 110 volt electrical outlets
- Interior stored 110 volt patio convenience outlet

Full Service Package Design:

- Exclusive automotive type frontal access hood with open/set/close hinge mechanism, handle/latch mechanism, and automatic hood lite.
- Full frontal access to oil dipstick, oil filler tube, gas tank fills, engine air cleaner, radiator cap, windshield wiper motors, and fuse block.
- Batteries located under entrance step for easy access and removal.
- No need for service station attendant to enter coach for routine service station operations.
- Onan generator is forward mounted for better weight distribution and balance.

Engineering Thought—The Key to Progress:

The Sportscoach Motor Home is the result of almost two years engineering research and development by SCA, a Subsidiary of B&M Industries, Inc., in co-operation with major outside manufacturers, suppliers, and vendor companies; consulting

- Safety 4-way flashers
- Dual automotive heater and defroster system with driver control for inside and outside air and temperature
- Cigarette lighter and portable ashtrays

- Abundance of cabinets and interior access storage space
- * Maximum interior storage group — includes dual rear overhead cabinets (both sides) and extra ¾ length wardrobe
- Interior privacy curtains for windshield
- Two ceiling vents
- Skylite and roof access safety-escape hatch-vent
- Aero type lites
- Aero type door construction
- Entrance step lite

Leveling of coach/for refrigerator operation is not required

- Double stainless steel sinks
- Formica galley top
- Also includes removable washable side guide gallery storage drawers (plastic)
- Dinette seats six adults

*Mandatory Option Package on this model. (See Price List)

both sides.

- Custom sliding dressing room/bedroom door
- Dinette easily converts to full size, 48" wide double bed
- Twin beds are full 76" by 31" wide

- Large dressing room mirror with vanity shelf
- Thetford Custom Line Toilet
- Deluxe medicine cabinet and mirror
- 110 volt outlet

- Concealed hose carrier
- 40 gallon pressurized fresh water system, air compressor included
- Moen premium water saver faucets throughout

coil optional — see "Optional Equipment")

- Dual automotive heater/defroster (See Sports Cab)
- 14 gallon propane storage tank

- 25 foot power cable for 110 volt external source
- 35 amp heavy duty converter-charger

- Entire Chevrolet engine assembly can be removed from the front of the coach in approximately the same time as required for a passenger car.
- Sportscoach Operator's Manual, and Sportscoach Full Service Manual provided.
- Full Chevrolet chassis, engine, and powertrain warranty applicable at any authorized Chevrolet dealer.

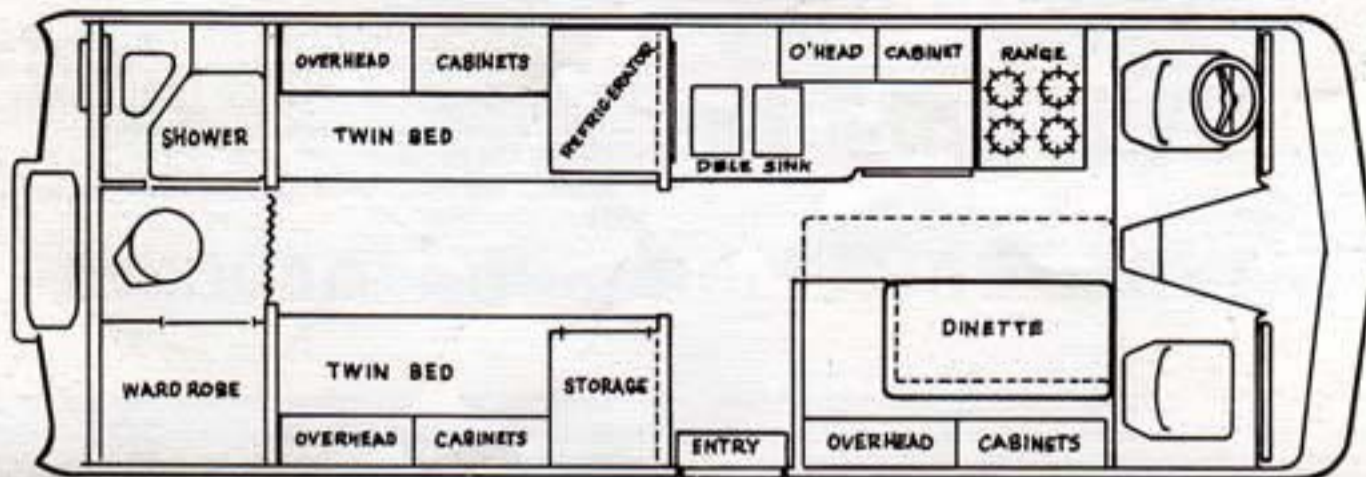
firms; and SCA's own leading expert personnel from the Recreational Vehicle Industry and the Automotive Industry. B&M Recreational Vehicle Products Division is manufacturer of the B&M Traveler Transmissions, B&M Trans-Coolers, and

equipment for Recreational Vehicles. B&M Automotive Products Division is manufacturer of the world famous B&M Racing Transmissions, Special Performance Automotive Equipment, and Special Performance Vehicles.

B&M Industries, Inc., an engineering company founded by Robert and Donald Spar, has been number one in its field for

16 years.

The design parameter for Sportscoach: The Total Package Concept — engineer the motor home as a total integrated design chassis and body unit — like an automobile — not like a truck chassis with a house or trailer type box mounted on it.



Specifications

Chassis:

- Chevrolet PE 314 Motor Home Chassis, Heavy Duty
- 157" Wheelbase
- High output 350 cubic inch V-8
- Lightweight engine design, 255 horsepower rating
- M-40 Turbo-HydraMatic 3-speed automatic transmission
- Power Steering
- Power Brakes
- Heavy duty Delco Energizer Battery, 85 amp
- Heavy duty Alternator, 61 amp
- Heavy duty cooling system with thermo fan control
- Two stage heavy duty rear springs on full floating rear axle, 7200 lbs. capacity
- 4.57 Rear axle ratio
- Independent Front Suspension
- 32 gallon fuel tank

Wheels: 16.5 X 6.75 S.D.C. wide base

Tires: Duals — 8.00 X 16.5 6-ply std. with full options, 8.00 X 16.5 8-ply mandatory option. Singles — (low profile H.D. flotation type) — Four 9.50 X 16.5 8-ply, optional. Or front 9.50 X 16.5, rear 12.00 X 16.5 8-ply, also available.

Overall Length: 25' 7"

Overall Height:

8' 11" (Nominal loading) (Including Air Cond)

Curb Weight: Base Vehicle 7420 lbs.; With full load of consumables* 8130 lbs.; Maximum weight with all optional equipment and consumables* 9080 lbs.
*Consumables consist of 64 gals gasoline, 20 gals propane, and full (40 gal) water tank.

Interior Height: 6' 3"

Overall Width: 7' 9"

Optional Equipment

Optional Equipment:

- 4000 Watt, 110 Volt Generator (Onan) with hour meter and remote starter including noise and vibration suppressor package
- High Output Automotive Air Conditioner — custom dash mount
- 110 Volt Roof Mounted Air Conditioner — Coleman Mach I
- Lear Jet AM/FM Stereo Multiplex Radio and automatic station seeker and 4-8 track stereo tape deck (with dual stereo speakers)
- AM Push Button Radio
- Dual Rear Stereo Speakers
- Additional 32-gal gas tank with dash mounted switchover tank and gauge control (total capacity, 64-gals.)

- Spare tire and heavy duty wide base wheel - 8-ply 9.50 X 16.5
- Transmission cooler (B&M Trans-Cooler)
- Heavy Duty Dual Delco Energizer Battery System
- Chrome Trailer Hitch with ball
- Double entrance step (replaces single step)
- Extra capacity (24-gal) Propane Tank
- Engine Water Pre-Heating for hot water heater
- Cuno Micro-Klean Water Purifier
- Rear auxiliary automotive type heater in bedroom
- Power Roof Vent (bathroom)
- Drapes Behind Driver
- Special Safety Package (Fire Extinguisher, Flare Kit, First Aid Kit)

*Mandatory Option Package on this model. (See Price List)

DEALER

sportscoach corporation of america

P.O. Box 4156, Van Nuys, California 91412

A Subsidiary of B&M Industries, Inc.



All illustrations and specifications in this literature are based on the latest product information available at the time of publication approval. The right is reserved to make changes at any

time without notice in prices, colors, equipment, specifications and models.